

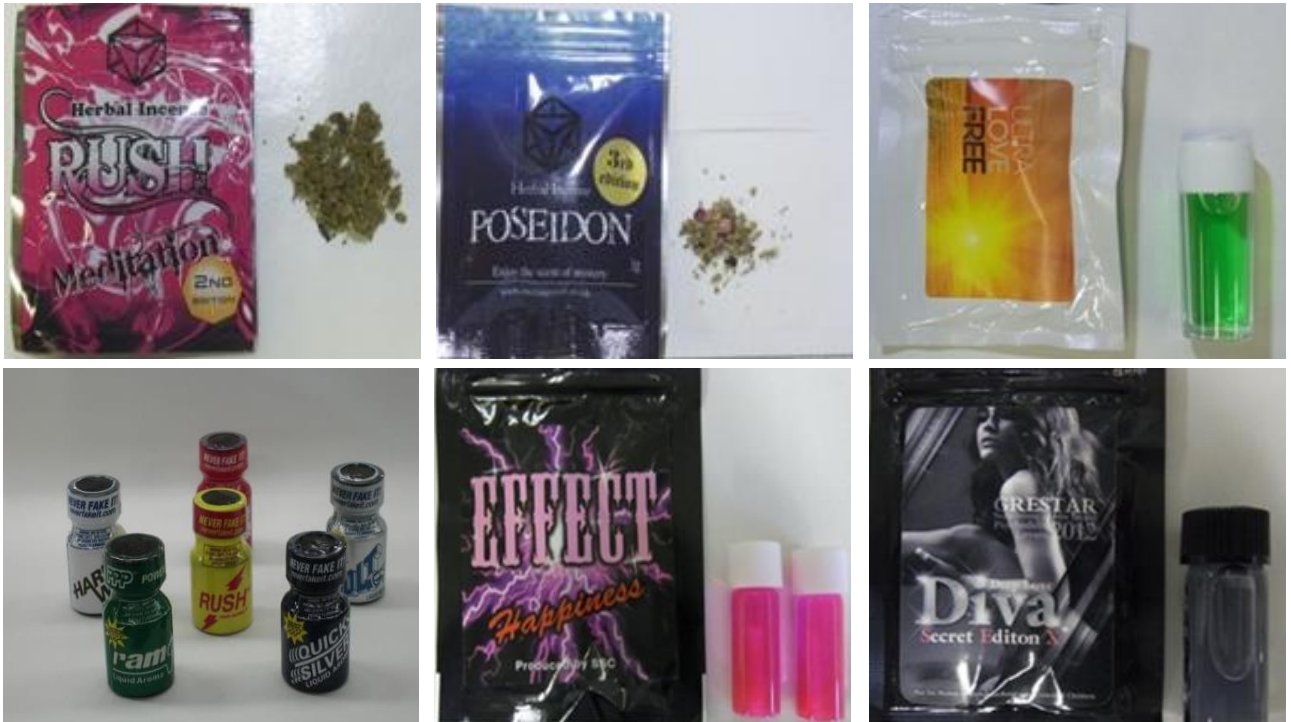


# Notice! Designer Drugs/NPS\*

\* New Psychoactive Substances (NPS) are substances of abuse in pure form or preparation that may be psycho-toxic and pose a threat to public health.

Over 2,000 designer drugs / NPS, such as "Rush", are designated as illegal substances by Japanese law.

The import, possession and use of these substances are subject to punishment under the law in Japan.



List of these substances is available in the below website provided by the Ministry of Health, Labor and Welfare (MHLW).

[https://www.mhlw.go.jp/stf/seisakunitsuite/bunya/kenkou\\_iryuu/iyakuhin/yakubuturanyou/gyousei-gaikyo/torishimari\\_00002.html](https://www.mhlw.go.jp/stf/seisakunitsuite/bunya/kenkou_iryuu/iyakuhin/yakubuturanyou/gyousei-gaikyo/torishimari_00002.html)

