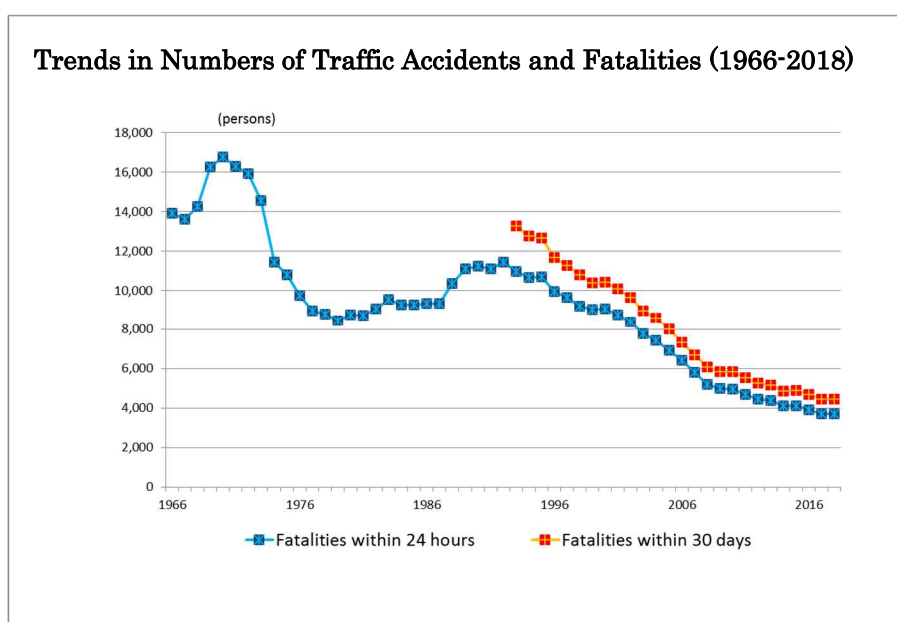


TRAFFIC POLICE

1. Overview

In 2018, the total number of fatalities caused by traffic accidents was 3,532, the lowest since the National Rural Police, the predecessor of the NPA, started compiling traffic statistics under the current formula in 1948. Total numbers of traffic accidents and persons injured have declined over the past fourteen years.



Number of Traffic Accidents, Fatalities, and Persons Injured in 2018

| | 2018 | Change from the previous year | % |
|----------------------------|---------|-------------------------------|-------|
| Accidents | 430,601 | -41,564 | -8.8% |
| Fatalities within 24 hours | 3,532 | -162 | -4.4% |
| Fatalities within 30 days | 4,166 | -265 | -6.0% |
| Injured | 525,846 | -55,004 | -9.5% |

2. Enforcement

The police analyze traffic accidents precisely and place emphasis on enforcement against vicious and serious violations, resulting in grave accidents including fatal ones, such as unlicensed driving, driving under the influence (DUI) of alcohol, serious speeding violations and ignoring traffic signals. The police also focus on illegal parking and reckless driving by motorcycle gangs (Bosozoku).

Among all the traffic violations, DUI of alcohol and unlicensed driving are the most serious issues. The Road Traffic Act has been tightened against these violations in recent years. The police have been putting great efforts into apprehending not only drivers but also those who aid and abet drivers to commit such violations.

In addition, the police have also intensified efforts to hold corporations and employers responsible for serious traffic violations committed by their employees.

A. Measures against Motorcycle Gangs (Boso-zoku)



Although stricter regulations and intensive crackdowns on motorcycle gangs have led to declining numbers of large-scale reckless driving and members of motorcycle gangs, the public demands further measures against them.

As of the end of 2018, the number of motorcycle gang groups totaled 146 with 6,286 members. 49.4 percent (%) of the members were juveniles under the age of 20. The police received approximately 28,000 complaints from citizens

regarding motorcycle gangs and their reckless driving.

On top of its law enforcement efforts, the police, in close cooperation with local residents, schools and workplaces, are working to promote and encourage motorcycle gang members to leave their groups.

B. Traffic Accident Investigations



In 2018, the number of traffic accidents causing fatalities and injuries totaled 430,601.

To respond to the tremendous number of traffic accidents, the police are introducing more efficient tools and methods in their investigations. One example is the installation of video cameras which automatically record traffic accidents that occur at intersections.

C. Traffic Policing on Expressways

In 2018, there were 7,934 accidents on expressways: 173 fatalities and 13,673 injuries.

The "Expressway Traffic Police Unit" has been established in the Tokyo Metropolitan Police Department and every other prefectural police. This unit engages in various activities such as traffic enforcement, traffic control, and traffic safety awareness campaigns in order to secure traffic safety and smooth flows on expressways.

D. Measures against Illegal Parking



Taking local residents' demands and opinions into account, the police focus enforcement on dangerous and disturbing parking, such as parking near pedestrian crossings and bus stops as well as on arterial roads.

The police also work with local governments to counter illegal parking by establishing local ordinances against it.