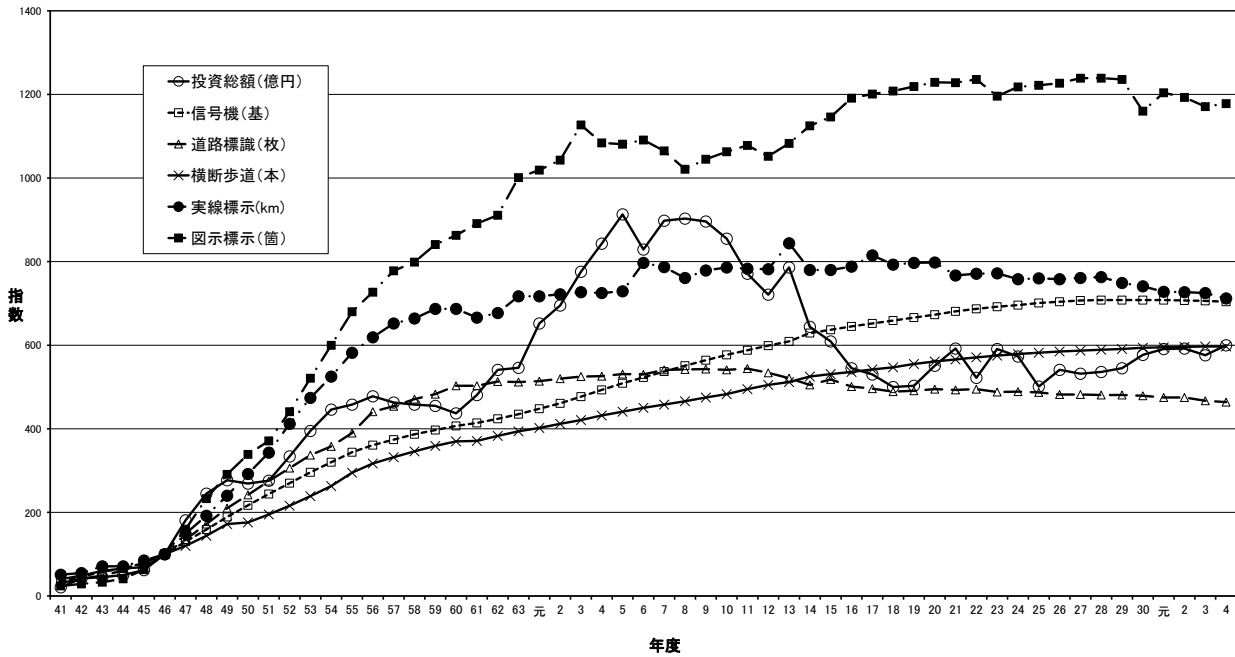


交通安全施設投資額及び交通安全施設の推移

交通安全施設関係指標(昭和46年度=100)



年度	41	42	43	44	45	46	47	48	49	50	51	52	53	54	55	56	57	58	59	60	61	62	63	平成元	2	3	4	5	6
投資総額(億円)	33.0	67.7	71.4	80.2	99.4	160.4	291.1	393.5	443.9	431.9	442.8	535.2	632.8	714.9	734.8	767.0	742.4	733.9	730.2	701.3	771.8	867.2	875.5	1,046.4	1,114.3	1,244.7	1,352.0	1,466.2	1,529.5
補助事業(億円)	8.0	24.1	28.1	10.7	17.8	66.0	120.7	160.7	178.4	194.9	220.5	250.9	294.4	337.6	320.7	324.6	288.1	270.1	227.6	201.0	238.0	196.0	251.3	267.8	289.2	363.6	386.0	256.3	
単独事業(億円)	25.0	43.6	43.3	69.5	81.6	94.4	170.4	232.8	265.5	237.0	222.3	284.3	338.4	377.3	414.1	442.4	454.3	463.8	502.6	500.3	559.8	629.2	679.5	794.1	846.6	955.5	988.4	1,078.2	
信号機(基)	10,067	13,441	16,941	19,517	23,290	29,396	38,244	46,824	55,630	63,846	71,728	79,259	87,081	94,056	101,100	106,083	110,045	113,722	116,616	119,520	121,804	124,603	128,010	131,829	135,634	140,254	144,958	149,482	153,733
道路標識(枚)	820,383	823,211	997,564	1,240,784	1,590,487	2,028,638	2,730,634	3,498,141	4,382,804	4,905,095	5,678,795	6,208,859	6,832,215	7,259,285	7,815,858	8,837,178	9,202,880	9,583,411	9,806,238	10,255,734	10,308,888	10,408,280	10,387,187	10,427,807	10,648,072	10,646,488	10,677,187	10,771,767	10,748,817
横断歩道(本)	77,643	94,956	116,934	128,126	134,178	184,538	238,011	280,350	335,123	342,842	379,804	420,889	463,984	512,432	573,539	618,487	646,019	672,804	698,991	719,648	721,966	746,351	766,289	782,918	801,484	819,628	840,603	857,388	875,530
実線標示(km)	8,190	8,802	11,374	11,426	13,704	16,090	24,014	30,885	38,695	47,021	55,170	66,354	76,254	84,411	93,578	99,583	104,961	110,489	110,465	107,184	108,939	115,351	115,374	116,248	116,920	116,614	117,217	128,311	
図示標示(箇)	91,703	106,028	124,991	165,176	237,401	375,121	601,108	874,179	1,090,882	1,272,579	1,991,491	1,863,985	1,866,107	2,280,131	2,850,415	2,728,428	2,916,188	2,968,924	3,183,459	3,228,374	3,341,829	3,416,907	3,765,170	3,823,128	3,918,961	4,228,870	4,066,482	4,065,927	4,091,885

年度	7	8	9	10	11	12	13	14	15	16	17	18	19	20	21	22	23	24	25	26	27	28	29	30	令和元	2	3	4	
投資総額(億円)	1,440.0	1,447.9	1,438.4	1,370.7	1,238.7	1,156.7	1,260.0	1,033.2	976.9	873.7	850.7	801.7	806.1	884.4	949.7	837.4	947.6	918.9	803.4	868.3	853.3	860.1	874.3	926.0	947.4	950.4	923.4	962.0	
補助事業(億円)	382.3	344.1	368.3	405.1	403.8	396.2	508.2	371.0	350.0	327.3	326.7	307.3	307.3	486.8	451.1	410.3	454.0	473.6	372.3	379.3	370.7	359.1	357.2	389.5	410.7	441.8	383.5	374.7	
単独事業(億円)	1,057.7	1,103.8	1,068.1	965.6	832.9	759.5	751.8	662.2	626.9	546.4	524.0	494.4	498.8	417.6	498.6	427.1	493.6	445.3	431.1	489.0	482.6	501.0	517.1	536.5	536.7	508.6	539.9	587.3	
信号機(基)	167,782	161,891	165,863	169,614	172,981	178,013	179,061	184,873	187,393	189,559	191,770	193,857	195,887	197,958	200,084	201,878	203,489	204,713	206,084	207,016	207,820	208,152	208,228	208,251	208,188	207,848	207,421	207,057	
道路標識(枚)	10,884,878	10,988,782	11,012,874	10,978,438	11,082,089	10,832,964	10,860,888	10,282,887	10,489,918	10,184,911	10,044,638	9,925,847	9,970,882	10,044,889	9,991,083	10,011,673	9,989,348	9,923,547	9,877,253	9,778,050	9,775,600	9,782,848	9,785,629	9,788,290	9,845,122	9,890,387	9,480,138	9,415,740	
横断歩道(本)	890,723	907,424	923,840	939,259	963,144	982,570	996,197	1,020,448	1,033,799	1,040,902	1,064,219	1,064,939	1,060,389	1,062,238	1,100,898	1,110,998	1,118,336	1,126,688	1,132,399	1,137,809	1,142,883	1,146,201	1,149,977	1,156,987	1,165,987	1,167,803	1,169,542	1,180,911	1,181,113
実線標示(km)	126,578	122,622	125,380	128,449	125,914	125,838	135,787	125,436	125,502	126,745	131,141	127,680	129,189	128,375	123,411	124,129	124,284	121,938	122,349	121,950	122,386	122,713	120,451	119,183	117,083	116,902	116,650	114,808	
図示標示(箇)	8,895,149	8,831,481	8,816,991	8,989,001	8,948,239	8,945,611	8,985,490	8,221,541	8,298,963	8,487,884	8,596,871	8,591,893	8,571,980	8,409,045	8,407,852	8,637,370	8,488,284	8,470,829	8,582,089	8,602,848	8,648,172	8,448,731	8,635,741	8,382,848	8,516,387	8,478,895	8,384,349	8,418,737	

(注)道路標識については、56年度から(枚)とした。